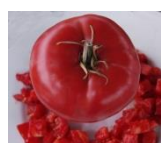


## 2017 HEIRLOOM TOMATO STARTS



**AUNT GINNY'S PURPLE:** Produces big indeterminate plants that yield abundant crops of 1 lb deep pink tomatoes. Among one of the best heirlooms. Use in salads and sandwiches.



**AUNT RUBY'S GERMAN GREEN:** 1 lb fruit that ripens to greenish yellow. Superb fruity, sweet and slightly spicy tomato.



**BEEFSTEAK:** Excellent productivity. Indeterminate. 4-5 inches. Excellent taste and meaty flavor. Eat fresh, use in cooking or salads or sandwiches or canning.



**BIG RAINBOW:** Yields moderate to large tomatoes 1 to 2 lbs. Rainbow appearance with green shoulders and red and gold streaks. Very juicy and sweet.



**BLACK FROM TULA:** Large black fruit, slightly flat. Deliciously outstanding. Rich, slightly salty, smoky flavor.



**BLACK KRIM:** Rare outstanding tomato. Intense, slightly salty flavor. One of the best black tomatoes..



**BOXCAR WILLIE:** 10-16 oz tomatoes. Bright orange-red. Well balances, rich and sweet. Good for eating or canning. Produces well until frost. Resists disease and cracking..



**BRANDYWINE:** Robust, old fashioned flavor. 12 to 16 oz. This is what tomato flavor is all about.



**CARBON:** A black tomato which produces prolific amounts of 10-14 oz tomatoes. Rich complex flavors. Won a taste test between 10 tomatoes at Cornell Research Farm.



**CHEROKEE PURPLE:** One of the best heirloom tomatoes. Dusky rose to purple. 12 to 16 oz fruits. Very popular for its rich, complex and sweet flavors.



**DR. WYCHE'S YELLOW:** One of the best tasting yellow tomatoes. Has few seeds. The 1 lb fruit has a tropical fruit flavor with low acid making it a perfect slicing tomato. Reliable yields.



**GIANT SYRIAN:** 1 lb red meaty fruit. Good flavor ranging from sweet to tart.



**GREEN ZEBRA:** Exquisite tomato used in upscale restaurants. A great tomato for salads. Fresh with a sharp bite. A real beauty.



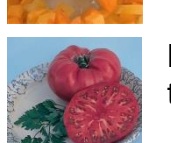
**HILLBILLY:** 1 to 2 lbs. Very sweet, fruity orange-yellow with red stripes. Low acid.



**KELLOGGS:** Pale to deep orange. Thin skinned and meaty. Few seeds. Sweet and tangy.



**LILLIAN'S YELLOW:** 10 to 16 oz fruit with thin skin. Mildly sweet, citrus flavor. Few seeds. Perfect for a salad.



**MORTGAGE LIFTER:** Bicolored, 1 to 2 lbs. Fruity flavor. Selling these tomatoes saved the farm!



**PAUL ROBESON:** Black and green beefsteak. Very fruitful, earthy flavor. Good acid-sweet balance. Won best of show. Excellent choice for cooler climates.



**PINEAPPLE:** 2 Lb yellow and red tomato. Yellow interior. Few seeds. A show stopper.



**PRUDEN'S PURPLE:** Comparable to Brandywine. 1 lb. Excellent flavor. Sets the standard.



**WINS ALL:** Named because of all of the awards the tomato has won. Disease resistant. 1-2 lbs. Intense, sweet, true tomato flavors.



**YELLOW PERFECTION:** From the 1800's, golf ball sized tomato. Suitable for cooler climates.